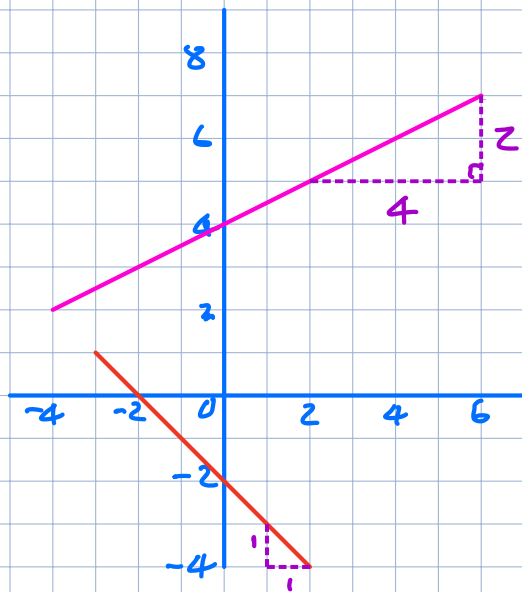


Recognising Straight Lines

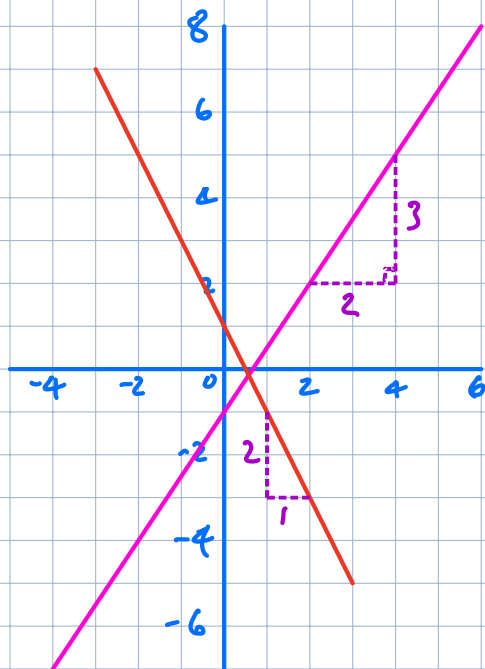


$$y = mx + c$$
$$m = \frac{2}{4} = \frac{1}{2}$$

$$y = \frac{1}{2}x + 4$$

$$m = -\frac{1}{1} = -1$$

$$y = -x - 2$$

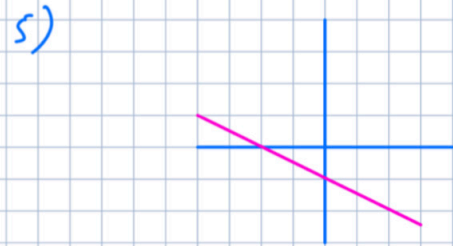
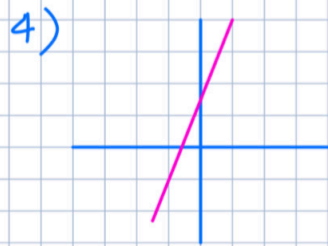
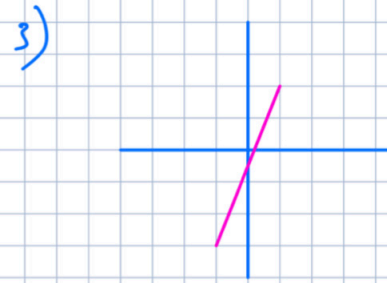
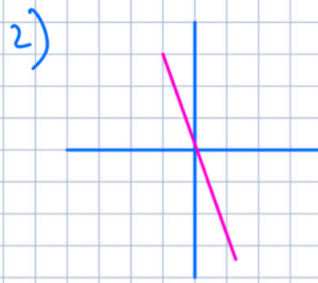


$$y = mx + c$$

$$y = \frac{3}{2}x - 1$$

$$y = -2x + 1$$

Recognising Straight Lines From Sketches



A $y = 3x + 5$

B $y = 2x - 1$

C $y = -\frac{1}{2}x - 4$

D $y = x + 3$

E $y = -2x$

A4

B3

C5

D1

E2