

Correlation and Regression

- 5 The table shows average monthly temperature, t ($^{\circ}\text{C}$), and the number of pairs of gloves, g , a shop sells each month.

t ($^{\circ}\text{C}$)	6	6	50	10	13	16	18	19	16	12	9	7
g	81	58	50	42	19	21	4	2	20	33	58	65

The following statistics were calculated for the data on temperature:

mean = 15.2, standard deviation = 11.4

An outlier is an observation which lies ± 2 standard deviations from the mean.

a Show that $t = 50$ is an outlier. (1 mark)

b Give a reason whether or not this outlier should be omitted from the data. (1 mark)

The equation of the regression line of t on g for the remaining data is $t = 18.4 - 0.18g$.

c Give an interpretation of the value -0.18 in this regression equation. (1 mark)

a) outlier if $t > \bar{t} + 2s.d_t$

$$15.2 + 2 \times 11.4 = 38$$

$$50 > 38 \quad \therefore t = 50 \text{ is an outlier}$$

b) 50°C would not happen in a place with a temperate climate in the other 11 months

c) The drop in temperature in $^{\circ}\text{C}$ for every extra pair of gloves sold.

- E 5** The table shows the daily total rainfall, r mm, and daily total hours of sunshine, s , in Leuchars for a random sample of 11 days in August 1987, from the large data set.

r	0	6.8	0.9	4.8	0	21.7	1.7	4.9	0.1	2.2	0.1
s	8.4	4.9	10.2	4.5	3.3	3.9	5.4	1.8	9.7	1	4.6

© Crown Copyright Met Office

The median and quartiles for the rainfall data are: $Q_1 = 0.1$ $Q_2 = 1.7$ $Q_3 = 4.85$

An outlier is defined as a value which lies either $1.5 \times$ the interquartile range above the upper quartile or $1.5 \times$ the interquartile range below the lower quartile.

- a Show that $r = 21.7$ is an outlier. (1 mark)
- b Give a reason why you might:
 i include ii exclude this day's readings. (2 marks)
- c Exclude this day's readings and draw a scatter diagram to represent the data for the remaining ten days. (3 marks)
- d Describe the correlation between rainfall and hours of sunshine. (1 mark)
- e Do you think there is a causal relationship between the amount of rain and the hours of sunshine on a particular day? Explain your reasoning. (1 mark)

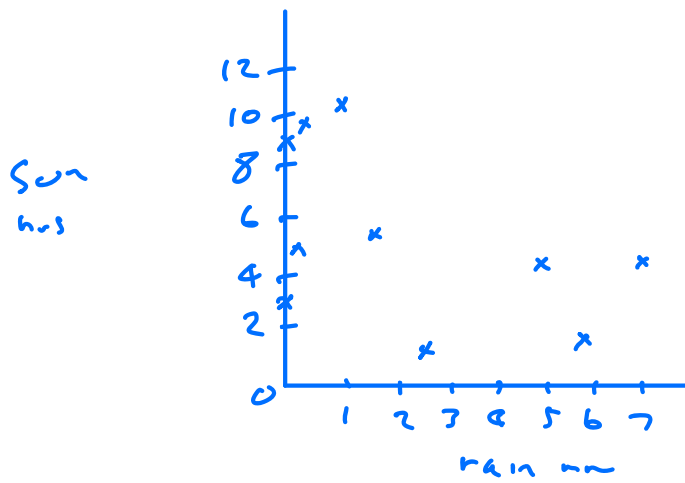
62

$$\begin{aligned}
 \text{a) outlier if } &> Q_3 + 1.5 \times IQR \\
 &= 4.85 + 1.5 \times (4.85 - 0.1) \\
 &= 11.975
 \end{aligned}$$

$$r = 21 > 11.975 \quad \text{so } r = 21 \text{ is an outlier}$$

b) include - could be a thunderstorm that brought unusual heavy rain

exclude - extremely unusual for August so could be a recording error



Weak negative correlation

No causal relationship between rain and sun

Perhaps cloud cover and sun, but can have cloud without rain
