

Write your name here

Surname

Other names

Pearson Edexcel
Level 3 GCE

Centre Number

--	--	--	--	--

Candidate Number

--	--	--	--

Mathematics

Advanced Subsidiary

Paper 1: Pure Mathematics

Sample Assessment Material for first teaching September 2017

Time: 2 hours

Paper Reference

8MA0/01

You must have:

Mathematical Formulae and Statistical Tables, calculator

Total Marks

--

Candidates may use any calculator permitted by Pearson regulations. Calculators must not have the facility for algebraic manipulation, differentiation and integration, or have retrievable mathematical formulae stored in them.

Instructions

- Use **black** ink or ball-point pen.
- If pencil is used for diagrams/sketches/graphs it must be dark (HB or B).
- **Fill in the boxes** at the top of this page with your name, centre number and candidate number.
- Answer **all** the questions and ensure that your answers to parts of questions are clearly labelled.
- Answer the questions in the spaces provided
– *there may be more space than you need.*
- You should show sufficient working to make your methods clear. Answers without working may not gain full credit.
- Answers should be given to three significant figures unless otherwise stated.

Information

- A booklet 'Mathematical Formulae and Statistical Tables' is provided.
- There are 17 questions in this question paper. The total mark for this paper is 100.
- The marks for each question are shown in brackets
– *use this as a guide as to how much time to spend on each question.*

Advice

- Read each question carefully before you start to answer it.
- Try to answer every question.
- Check your answers if you have time at the end.
- If you change your mind about an answer, cross it out and put your new answer and any working underneath.

Turn over ►

S54257A

©2017 Pearson Education Ltd.

1/1/1/1/1/1/



Pearson

DO NOT WRITE IN THIS AREA

DO NOT WRITE IN THIS AREA

DO NOT WRITE IN THIS AREA

2. The curve C has equation

$$y = 2x^2 - 12x + 16$$

Find the gradient of the curve at the point $P(5, 6)$.

(Solutions based entirely on graphical or numerical methods are not acceptable.)

(4)

(Total for Question 2 is 4 marks)

3. Given that the point A has position vector $3\mathbf{i} - 7\mathbf{j}$ and the point B has position vector $8\mathbf{i} + 3\mathbf{j}$,

(a) find the vector \vec{AB} (2)

(b) Find $|\vec{AB}|$. Give your answer as a simplified surd. (2)

Horizontal lines for writing answers.

(Total for Question 3 is 4 marks)

DO NOT WRITE IN THIS AREA

DO NOT WRITE IN THIS AREA

DO NOT WRITE IN THIS AREA

5. Given that

$$f(x) = 2x + 3 + \frac{12}{x^2}, \quad x > 0$$

show that $\int_1^{2\sqrt{2}} f(x)dx = 16 + 3\sqrt{2}$

(5)

DO NOT WRITE IN THIS AREA

DO NOT WRITE IN THIS AREA

DO NOT WRITE IN THIS AREA

(Total for Question 5 is 5 marks)

8.

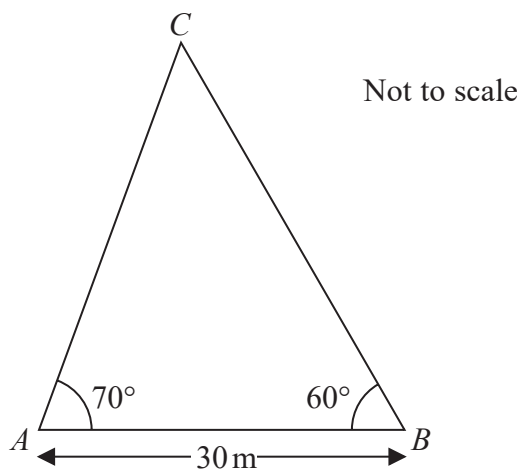


Figure 1

A triangular lawn is modelled by the triangle ABC , shown in Figure 1. The length AB is to be 30 m long.

Given that angle $BAC = 70^\circ$ and angle $ABC = 60^\circ$,

(a) calculate the area of the lawn to 3 significant figures. (4)

(b) Why is your answer unlikely to be accurate to the nearest square metre? (1)

DO NOT WRITE IN THIS AREA

DO NOT WRITE IN THIS AREA

DO NOT WRITE IN THIS AREA

9. Solve, for $360^\circ \leq x < 540^\circ$,

$$12 \sin^2 x + 7 \cos x - 13 = 0$$

Give your answers to one decimal place.

(Solutions based entirely on graphical or numerical methods are not acceptable.)

(5)

Horizontal lines for writing answers.

DO NOT WRITE IN THIS AREA

DO NOT WRITE IN THIS AREA

DO NOT WRITE IN THIS AREA

Question 9 continued

(This area contains 30 horizontal lines for writing.)

DO NOT WRITE IN THIS AREA

(Total for Question 9 is 5 marks)

10. The equation $kx^2 + 4kx + 3 = 0$, where k is a constant, has no real roots.

Prove that

$$0 \leq k < \frac{3}{4} \quad (4)$$

DO NOT WRITE IN THIS AREA

DO NOT WRITE IN THIS AREA

DO NOT WRITE IN THIS AREA

(Total for Question 10 is 4 marks)

12. A student was asked to give the exact solution to the equation

$$2^{2x+4} - 9(2^x) = 0$$

The student's attempt is shown below:

$$2^{2x+4} - 9(2^x) = 0$$

$$2^{2x} + 2^4 - 9(2^x) = 0$$

$$\text{Let } 2^x = y$$

$$y^2 - 9y + 8 = 0$$

$$(y - 8)(y - 1) = 0$$

$$y = 8 \text{ or } y = 1$$

$$\text{So } x = 3 \text{ or } x = 0$$

(a) Identify the two errors made by the student.

(2)

(b) Find the exact solution to the equation.

(2)

DO NOT WRITE IN THIS AREA

DO NOT WRITE IN THIS AREA

DO NOT WRITE IN THIS AREA

Question 13 continued

DO NOT WRITE IN THIS AREA

DO NOT WRITE IN THIS AREA

DO NOT WRITE IN THIS AREA

(Total for Question 13 is 7 marks)

14.

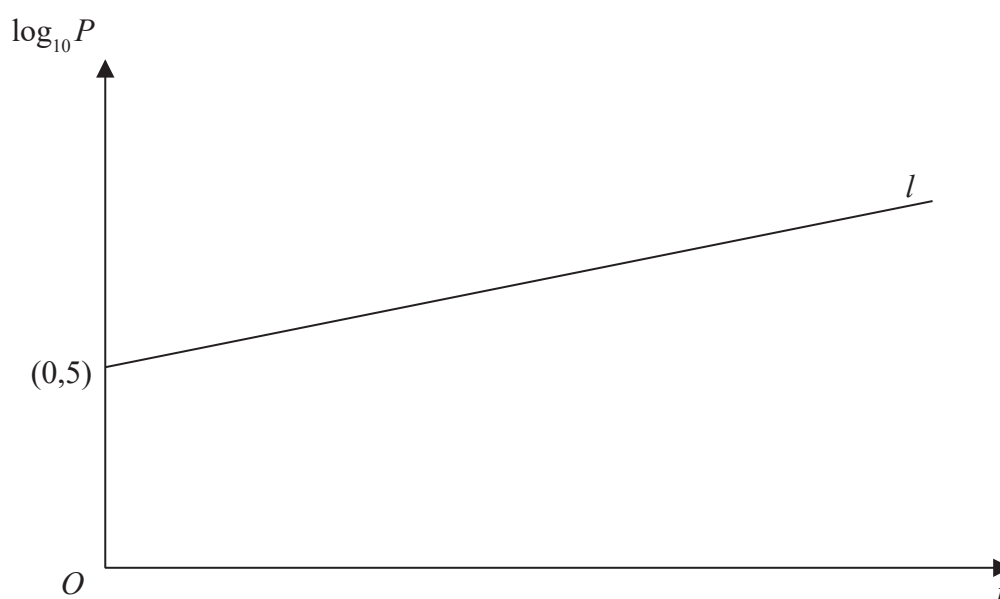


Figure 2

A town's population, P , is modelled by the equation $P = ab^t$, where a and b are constants and t is the number of years since the population was first recorded.

The line l shown in Figure 2 illustrates the linear relationship between t and $\log_{10} P$ for the population over a period of 100 years.

The line l meets the vertical axis at $(0, 5)$ as shown. The gradient of l is $\frac{1}{200}$.

- (a) Write down an equation for l . (2)
- (b) Find the value of a and the value of b . (4)
- (c) With reference to the model interpret
- (i) the value of the constant a ,
 - (ii) the value of the constant b . (2)
- (d) Find
- (i) the population predicted by the model when $t = 100$, giving your answer to the nearest hundred thousand,
 - (ii) the number of years it takes the population to reach 200 000, according to the model. (3)
- (e) State two reasons why this may not be a realistic population model. (2)

Question 14 continued

DO NOT WRITE IN THIS AREA

DO NOT WRITE IN THIS AREA

DO NOT WRITE IN THIS AREA

(Total for Question 14 is 13 marks)

15.

Diagram not drawn to scale

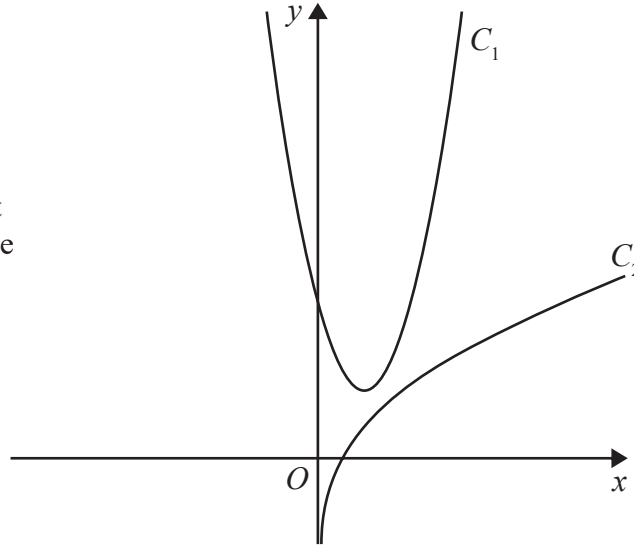


Figure 3

The curve C_1 , shown in Figure 3, has equation $y = 4x^2 - 6x + 4$.

The point $P\left(\frac{1}{2}, 2\right)$ lies on C_1

The curve C_2 , also shown in Figure 3, has equation $y = \frac{1}{2}x + \ln(2x)$.

The normal to C_1 at the point P meets C_2 at the point Q .

Find the exact coordinates of Q .

(Solutions based entirely on graphical or numerical methods are not acceptable.)

(8)

DO NOT WRITE IN THIS AREA

DO NOT WRITE IN THIS AREA

DO NOT WRITE IN THIS AREA

Question 15 continued

DO NOT WRITE IN THIS AREA

DO NOT WRITE IN THIS AREA

DO NOT WRITE IN THIS AREA

(Total for Question 15 is 8 marks)

16.

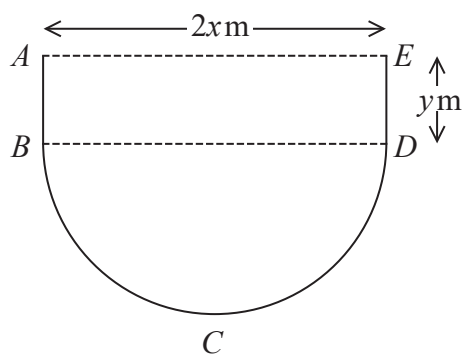


Figure 4

Figure 4 shows the plan view of the design for a swimming pool.

The shape of this pool $ABCDEA$ consists of a rectangular section $ABDE$ joined to a semicircular section BCD as shown in Figure 4.

Given that $AE = 2x$ metres, $ED = y$ metres and the area of the pool is 250 m^2 ,

(a) show that the perimeter, P metres, of the pool is given by

$$P = 2x + \frac{250}{x} + \frac{\pi x}{2} \quad (4)$$

(b) Explain why $0 < x < \sqrt{\frac{500}{\pi}}$ (2)

(c) Find the minimum perimeter of the pool, giving your answer to 3 significant figures. (4)

Question 16 continued

DO NOT WRITE IN THIS AREA

DO NOT WRITE IN THIS AREA

DO NOT WRITE IN THIS AREA

Lined writing area with horizontal lines.

(Total for Question 16 is 10 marks)

17. A circle C with centre at $(-2, 6)$ passes through the point $(10, 11)$.

(a) Show that the circle C also passes through the point $(10, 1)$.

(3)

The tangent to the circle C at the point $(10, 11)$ meets the y axis at the point P and the tangent to the circle C at the point $(10, 1)$ meets the y axis at the point Q .

(b) Show that the distance PQ is 58 explaining your method clearly.

(7)

Question 17 continued

DO NOT WRITE IN THIS AREA

DO NOT WRITE IN THIS AREA

DO NOT WRITE IN THIS AREA

Lined writing area for the answer to Question 17.

Question 17 continued

(Total for Question 17 is 10 marks)

TOTAL FOR PAPER IS 100 MARKS

DO NOT WRITE IN THIS AREA

DO NOT WRITE IN THIS AREA

DO NOT WRITE IN THIS AREA