













8.

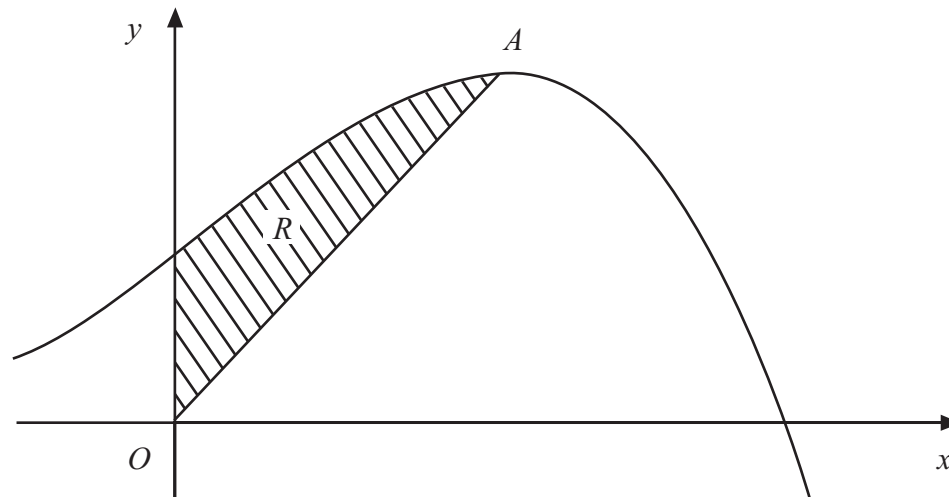


Figure 2

Figure 2 shows a sketch of part of the curve with equation  $y = 10 + 8x + x^2 - x^3$ .

The curve has a maximum turning point  $A$ .

- (a) Using calculus, show that the  $x$ -coordinate of  $A$  is 2. (3)

The region  $R$ , shown shaded in Figure 2, is bounded by the curve, the  $y$ -axis and the line from  $O$  to  $A$ , where  $O$  is the origin.

- (b) Using calculus, find the exact area of  $R$ . (8)

---

---

---

---

---

---

---

---

---

---

---

---

---

---

---

---

---

---

---

---

---

---

---

---

