

6. The function f is defined by

$$f: x \mapsto \frac{3 - 2x}{x - 5}, \quad x \in \mathbb{R}, \quad x \neq 5$$

(a) Find $f^{-1}(x)$.

(3)

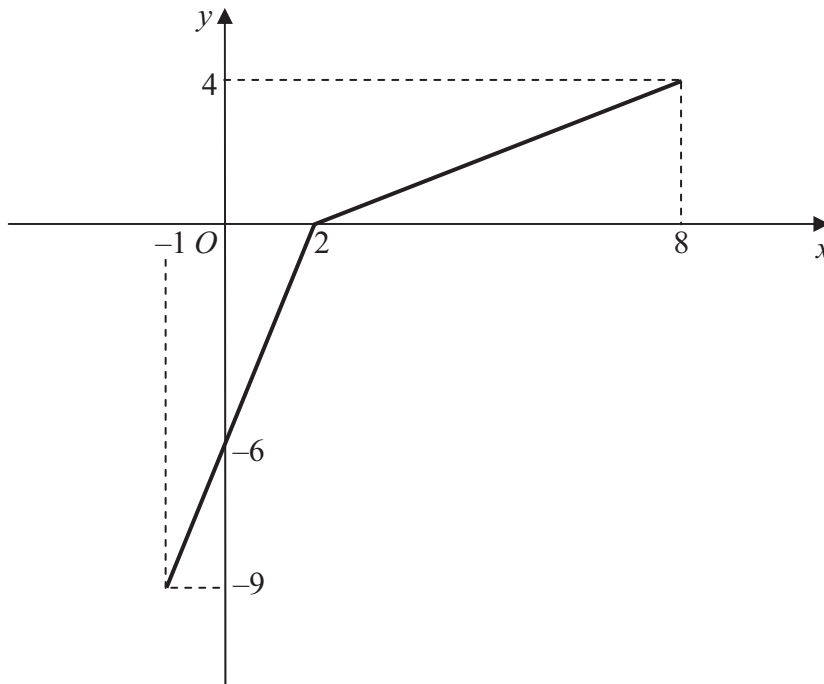


Figure 2

The function g has domain $-1 \leq x \leq 8$, and is linear from $(-1, -9)$ to $(2, 0)$ and from $(2, 0)$ to $(8, 4)$. Figure 2 shows a sketch of the graph of $y = g(x)$.

(b) Write down the range of g .

(1)

(c) Find $gg(2)$.

(2)

(d) Find $fg(8)$.

(2)

(e) On separate diagrams, sketch the graph with equation

(i) $y = |g(x)|,$

(ii) $y = g^{-1}(x).$

Show on each sketch the coordinates of each point at which the graph meets or cuts the axes.

(4)

(f) State the domain of the inverse function g^{-1} .

(1)



3.

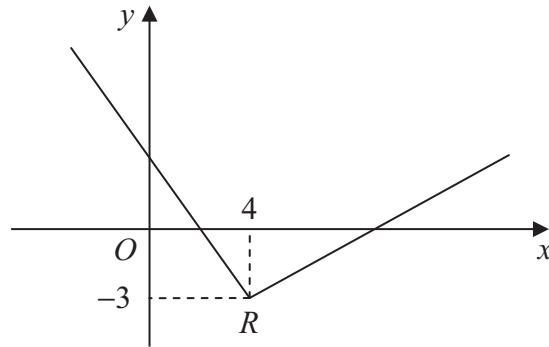


Figure 1

Figure 1 shows part of the graph of $y = f(x)$, $x \in \mathbb{R}$.

The graph consists of two line segments that meet at the point $R(4, -3)$, as shown in Figure 1.

Sketch, on separate diagrams, the graphs of

(a) $y = 2f(x+4)$, **(3)**

(b) $y = |f(-x)|$. **(3)**

On each diagram, show the coordinates of the point corresponding to R .



2.

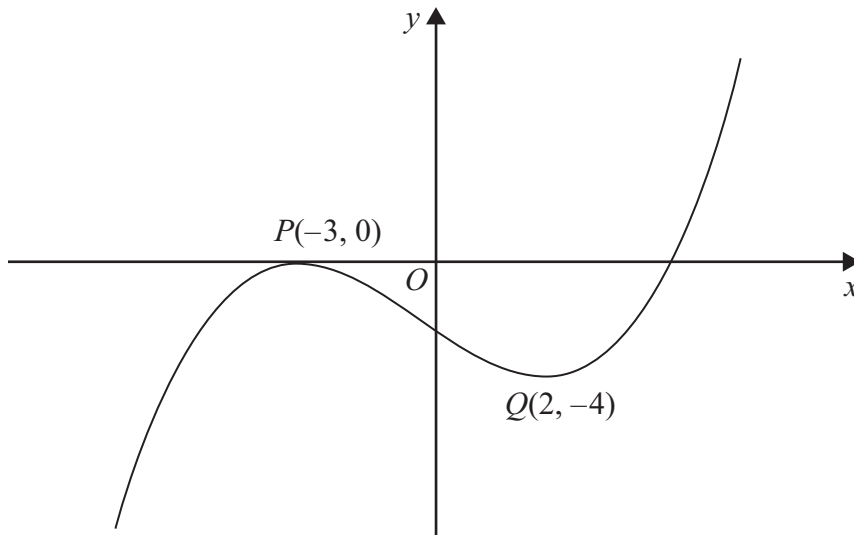


Figure 1

Figure 1 shows the graph of equation $y = f(x)$.

The points $P(-3, 0)$ and $Q(2, -4)$ are stationary points on the graph.

Sketch, on separate diagrams, the graphs of

(a) $y = 3f(x + 2)$

(3)

(b) $y = |f(x)|$

(3)

On each diagram, show the coordinates of any stationary points.



4.

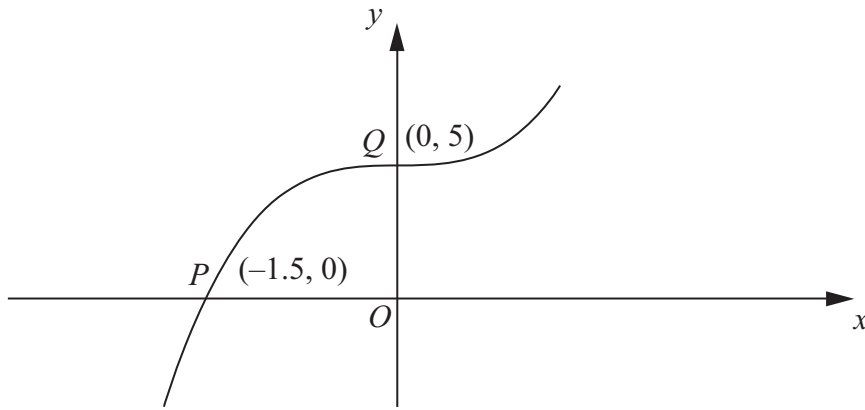


Figure 2

Figure 2 shows part of the curve with equation $y = f(x)$
 The curve passes through the points $P(-1.5, 0)$ and $Q(0, 5)$ as shown.

On separate diagrams, sketch the curve with equation

(a) $y = |f(x)|$ **(2)**

(b) $y = f(|x|)$ **(2)**

(c) $y = 2f(3x)$ **(3)**

Indicate clearly on each sketch the coordinates of the points at which the curve crosses or meets the axes.



Leave
blank

Question 4 continued



Leave
blank

Question 3 continued



2. Given that

$$f(x) = \ln x, \quad x > 0$$

sketch on separate axes the graphs of

(i) $y = f(x)$,

(ii) $y = |f(x)|$,

(iii) $y = -f(x - 4)$.

Show, on each diagram, the point where the graph meets or crosses the x -axis.
In each case, state the equation of the asymptote.

(7)



7. The function f has domain $-2 \leq x \leq 6$ and is linear from $(-2, 10)$ to $(2, 0)$ and from $(2, 0)$ to $(6, 4)$. A sketch of the graph of $y = f(x)$ is shown in Figure 1.

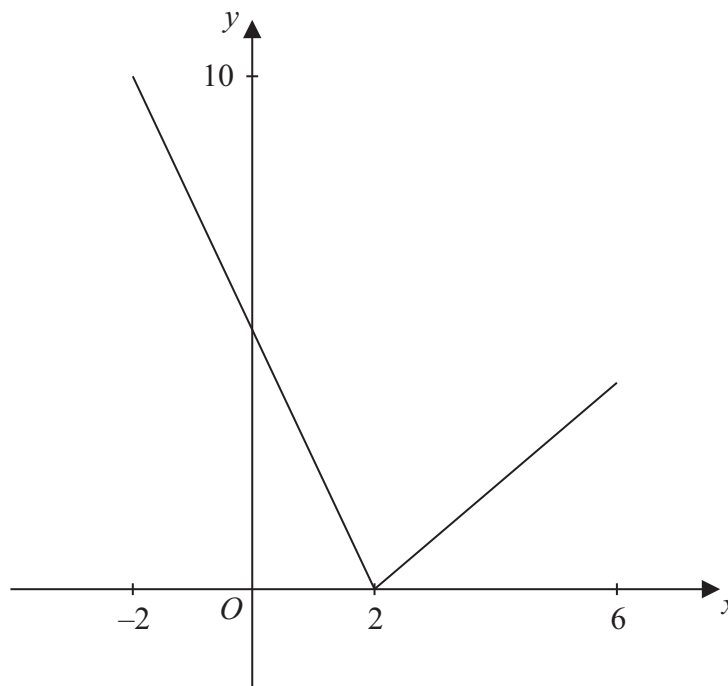


Figure 1

- (a) Write down the range of f . (1)
- (b) Find $ff(0)$. (2)

The function g is defined by

$$g : x \rightarrow \frac{4 + 3x}{5 - x}, \quad x \in \mathbb{R}, \quad x \neq 5$$

- (c) Find $g^{-1}(x)$ (3)
- (d) Solve the equation $gf(x) = 16$ (5)



