

Questions

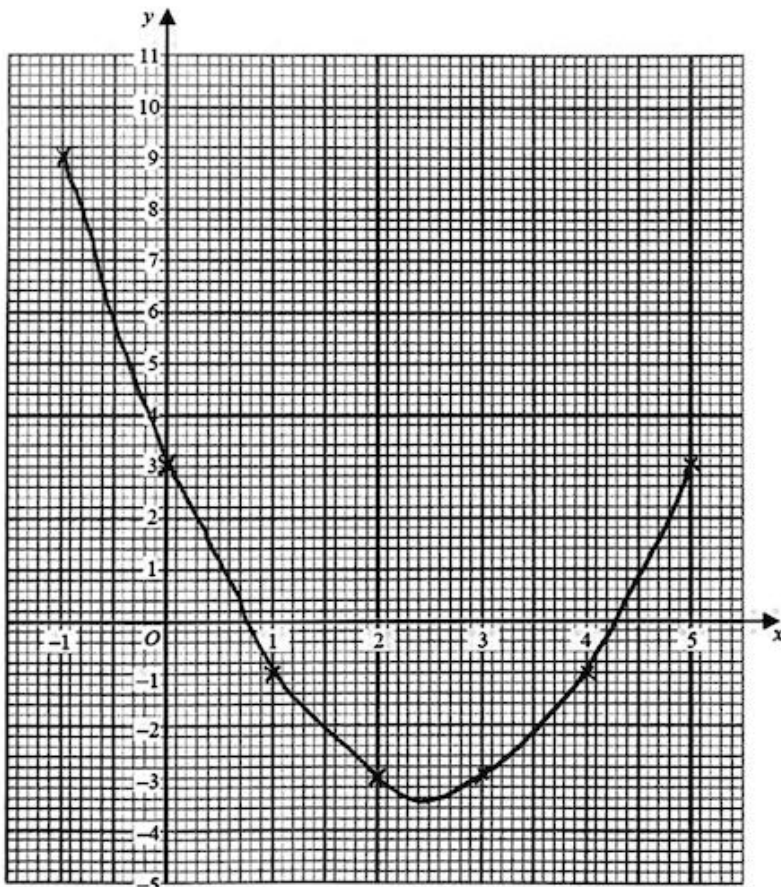
Q1.

(a) Complete the table of values for $y = x^2 - 5x + 3$

x	-1	0	1	2	3	4	5
y	9	3	-1	-3	-3	-1	3

(2)

(b) On the grid below, draw the graph of $y = x^2 - 5x + 3$ for values of x from $x = -1$ to $x = 5$



(2)

(c) Find estimates of the solutions of the equation $x^2 - 5x + 3 = 0$

x = 0.7

or x = 4.3

(2)

(Total for Question is 6 marks)

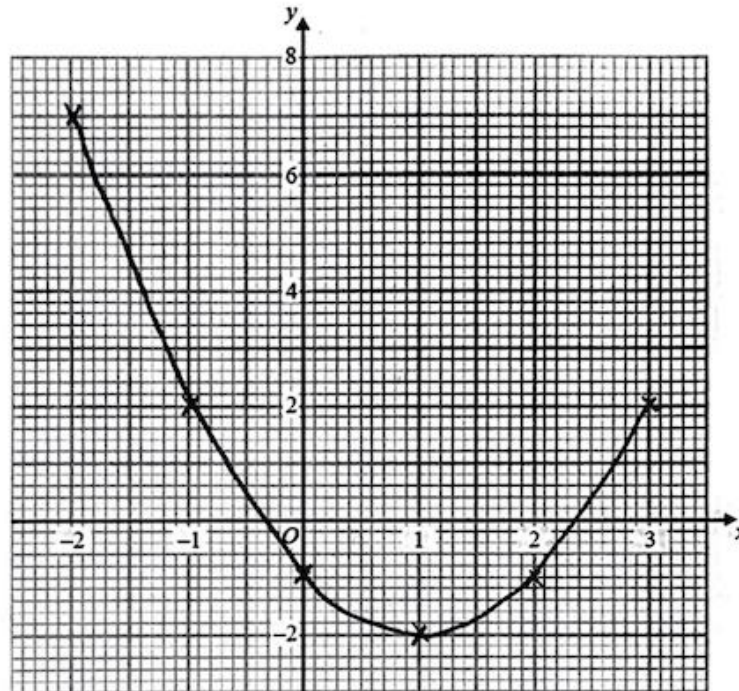
Q2.

(a) Complete the table of values for $y = x^2 - 2x - 1$

x	-2	-1	0	1	2	3
y	7	2	-1	-2	-1	2

(2)

(b) On the grid, draw the graph of $y = x^2 - 2x - 1$ for values of x from $x = -2 = 3$



(2)

(c) Find estimates for the solutions of the equation $x^2 - 2x - 1 = 0$

-0.3 2.35

(2)

(Total for Question is 6 marks)

Q3.

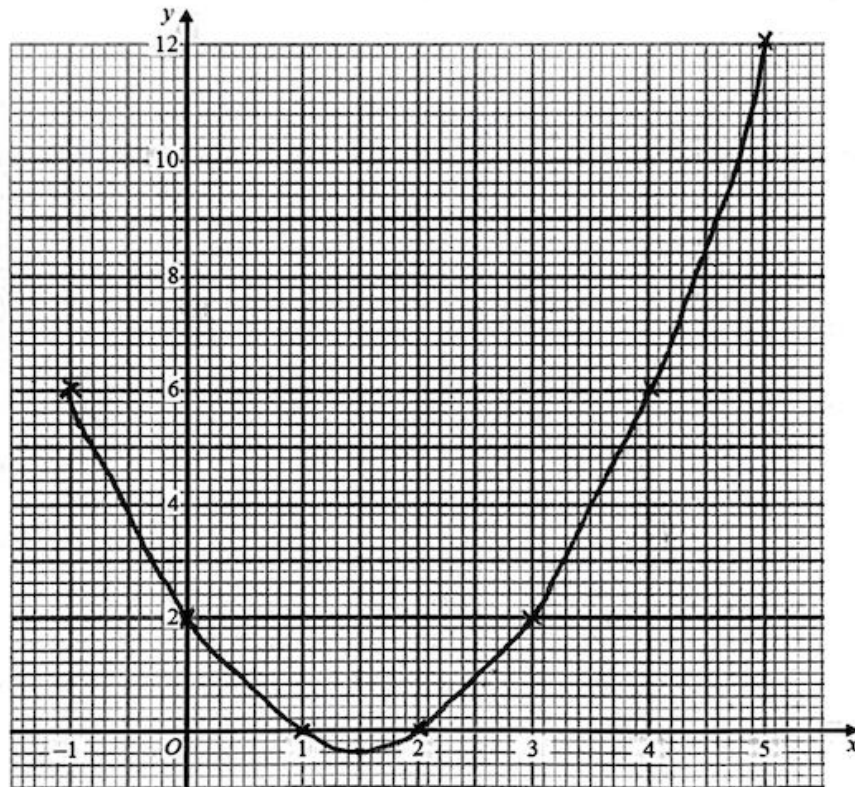
(a) Complete the table of values for $y = x^2 - 3x + 2$

x	-1	0	1	2	3	4	5
y	6	2	0	0	2	6	12

(2)

(b) On the grid, draw the graph of $y = x^2 - 3x + 2$ for values of x from -1 to 5

(2)



(c) Find estimates for the solutions of the equation $x^2 - 3x + 2 = 4$

..... -1 , 4

(2)

(Total for question = 6 marks)

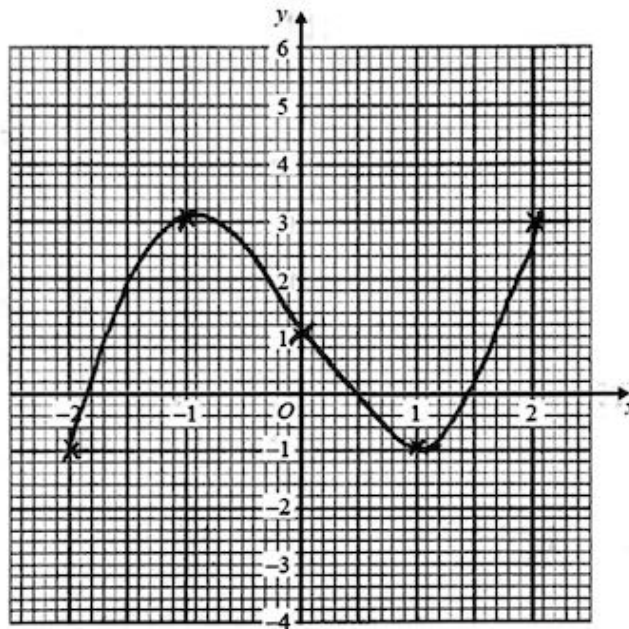
Q4.

(a) Complete the table of values for $y = x^3 - 3x + 1$

x	-2	-1	0	1	2
y	-1	3	1	-1	3

(2)

(b) On the grid, draw the graph of $y = x^3 - 3x + 1$ for values of x from -2 to 2



(2)

(Total for question = 4 marks)

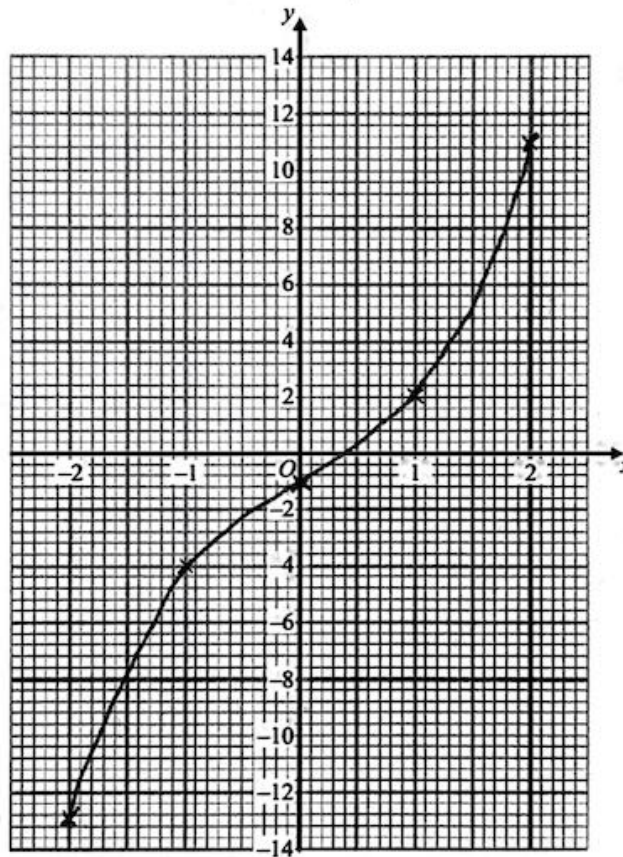
Q5.

(a) Complete this table of values for $y = x^3 + 2x - 1$

x	-2	-1	0	1	2
y	-13	-4	-1	2	11

(2)

(b) On the grid, draw the graph of $y = x^3 + 2x - 1$



(2)

(Total for Question is 4 marks)

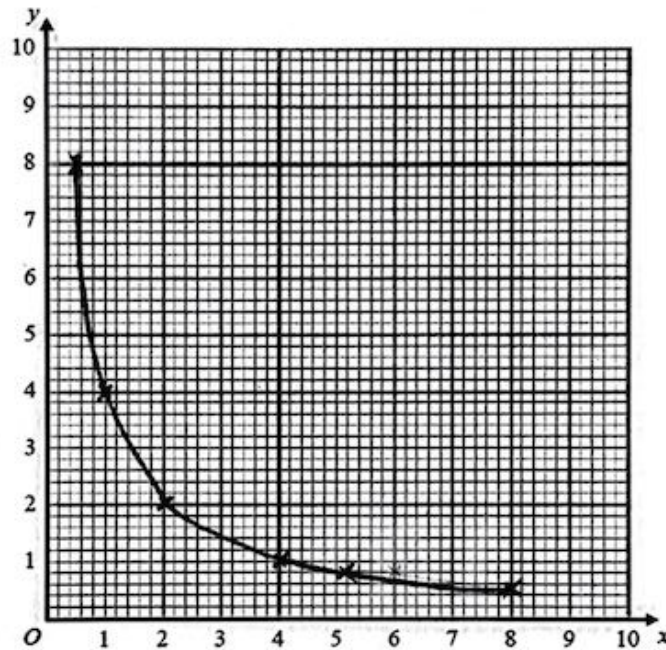
Q6.

(a) Complete the table of values for $y = \frac{4}{x}$

x	0.5	1	2	4	5	8
y	8	4	2	1	0.8	0.5

(2)

(b) On the grid, draw the graph of $y = \frac{4}{x}$ for $0.5 \leq x \leq 8$



(2)

(Total for Question is 4 marks)